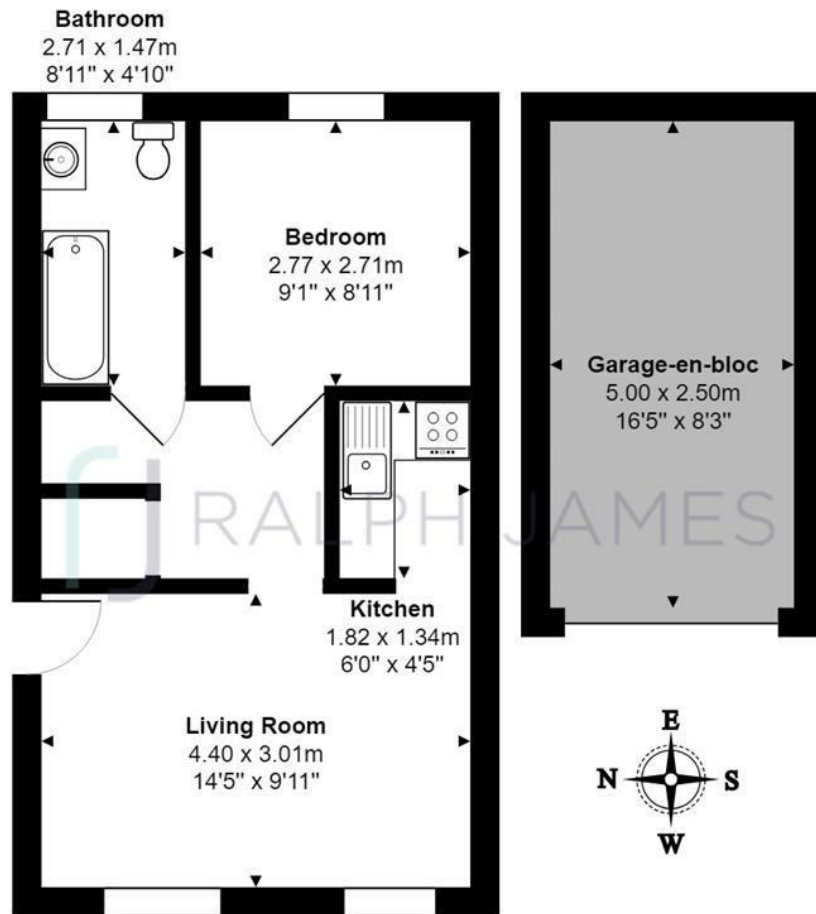


Mid Street
Nutfield
Surrey
£215,000



RALPH JAMES

FLOOR PLANS



First Floor Flat

Mid Street, Nutfield, Redhill

Total Area: 34.6 m² ... 373 ft² (excluding garage-en-bloc)

Floor Plan measurements are approximate and are for illustrative purposes only.

While we do not doubt the floor plans accuracy, we make no guarantee, warranty or representation as to the accuracy and completeness of the floor plan.
www.stillmoving.london © 2018

 RALPH JAMES



IN A NUTSHELL



Communal garden area



Bright living/ dining room



Recently updated kitchen



One double bedroom



Modern bathroom



Garage en-bloc & parking to the rear



WHAT'S GREAT?

Situated in the tranquil village of South Nutfield, sits this unique and contemporary one-bedroom converted apartment. Dating back to the 1900's retaining some of its original features with high ceilings.

During its recent updates, the different use of rooms contributes to an overall feeling of space, with freshly decorated rooms, a modern bathroom, updated kitchen and new carpet in the bedroom. The living room has two windows, flooding the room with natural light also providing evening sunlight. The central picture railings divide the colour palette with subtle grey and white tones and laminate flooring runs through the living room, kitchen and hallway.

The kitchen has white units providing plenty of storage and space for freestanding appliances. Entertaining guests will be easy with the sociable layout, so whilst they relax in the living room or at the dining table, you can chat away when preparing food and drinks.

The double bedroom is cosy with space for a large wardrobe and double bed, with morning light coming through the window. Modern and trendy, the bathroom has a white heated towel rail and a white three-piece suite with a 'traditional' shower fitting.

Outside, there is a communal garden area to the rear, a private garage en-bloc and parking to the rear. Nutfield Village is filled with history, period and new properties and local amenities. The village store is famous for its fresh baked pastries and coffee and nearby South Nutfield station is ideal for anyone needing to commute to London, Brighton and Gatwick.

Just a short drive away is Redhill town centre, which is filled with high street shops, supermarkets and entertainment. It also has an excellent train line with regular services and a bus station which can take you in and out of Nutfield.



Ashley likes it
because....

"This recently updated apartment is just perfect for any first time buyers, downsizers or even a little lock-up and go property! It would also make an excellent investment property, with the train station just minutes away and local amenities on the door step."

SELLER'S SECRET

"We've always loved the big windows and high ceilings. These make all the difference in a cosy flat and, in the afternoon/ early evening, there's nothing better than reading a book on the sofa by the window. The room just lights up in the low light. The garage too is a big plus for storage."

CLOSE TO HOME

South Nutfield train station 0.2m Earlswood train station 2.6m

Holborn's Village Store 101ft Priory Farm 0.9m

Nutfield Priory Hotel & Spa 1.3m Redhill Town Centre 2.6m

Reigate Town Centre 4.2m Gatwick Airport 7.3m

Lease: 88 yrs Service: £50 pcm GR: £100 pa

To buy or not to buy...

RALPH JAMES

39 High Street | Redhill | RH1 1RX | 01737 765555
admin@ralphjames.co.uk | www.ralphjames.co.uk

